

SOLOLIFT2 WC-1, WC-3 & CWC-3

COMPACT GREY WATER AND BLACKWATER HANDLING STATION

WATER SOURCE



Blackwater Grey Water

APPLICATION



Blackwater Handling Grey Water Handling

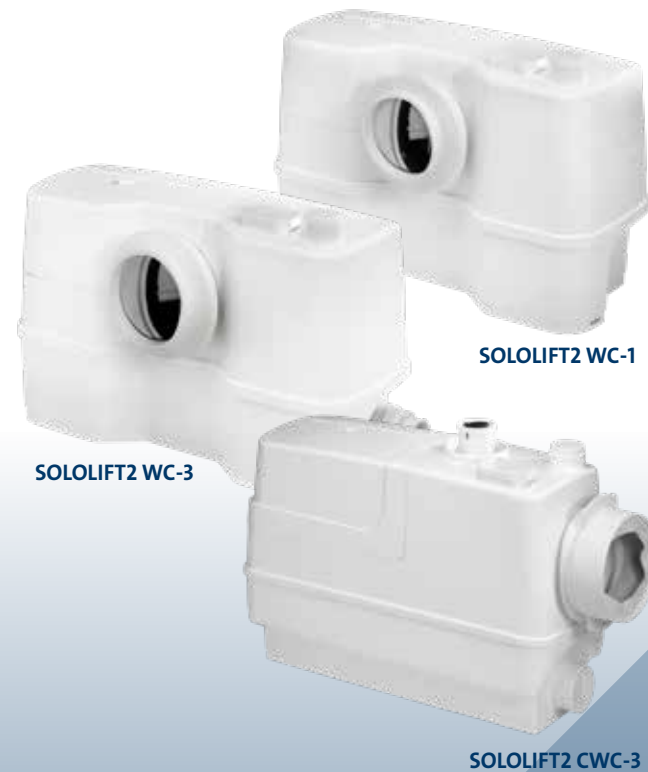
The Grundfos SOLOLIFT2 WC-1, WC-3 and CWC-3 lifting stations are all-in-one grinding and pumping units designed for the effective handling of a combination of bathroom grey water and toilet wastewater. Designed to be installed below street level or away from existing sewerage pipework.

- **Very low maintenance** - Thanks to the powerful built-in grinder, blockages are greatly minimised
- **Space saving design fits small spaces** - Compact units making them suitable for installation in to small bathrooms
- **Low installation costs** - Plumbing connections are adjustable up to 10 mm, making installation to existing or new pipework simple and inexpensive

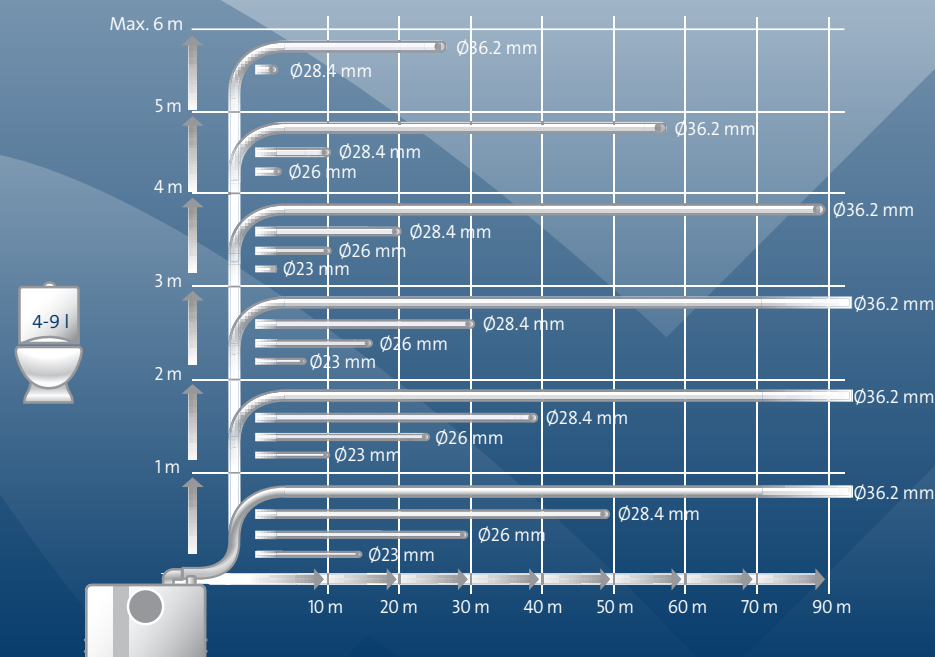
SOLOLIFT2 WC-1 - Suitable for connection to one floor mounted toilet and one additional appliance, such as a handbasin.

SOLOLIFT2 WC-3 - Suitable for connection to one floor mounted toilet and a maximum of three additional appliances, such as hand basins or a shower.

SOLOLIFT2 CWC-3 - Compact unit suitable for connection to one wall mounted toilet and a maximum of three additional appliances, such as hand basins or shower.



PUMP SIZING

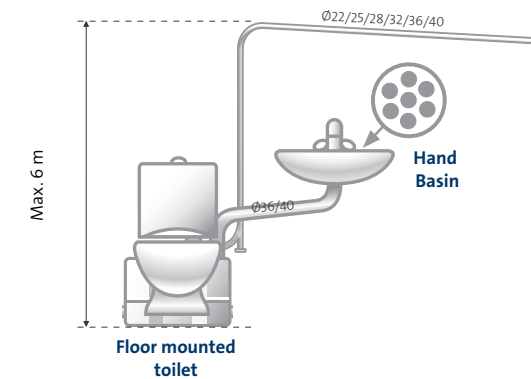


SCAN THE QR CODE TO LINK TO GRUNDFOS PRODUCT CENTER

TECHNICAL DATA

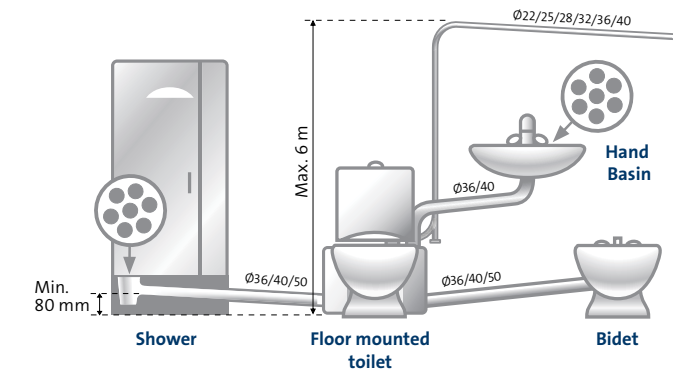
INSTALLATION SCHEMATIC*

SOLOLIFT2 WC-1

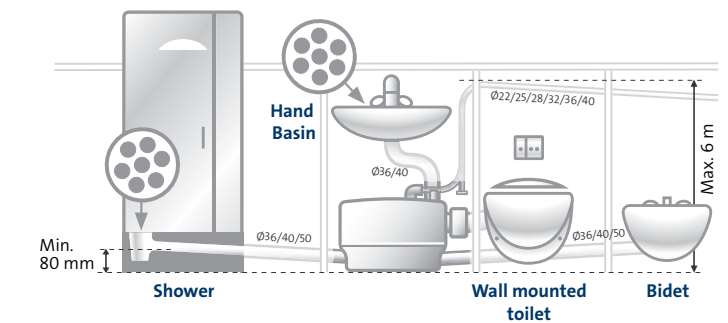


*Illustrative purposes only

SOLOLIFT2 WC-3



SOLOLIFT2 CWC-3



OPERATING CONDITIONS

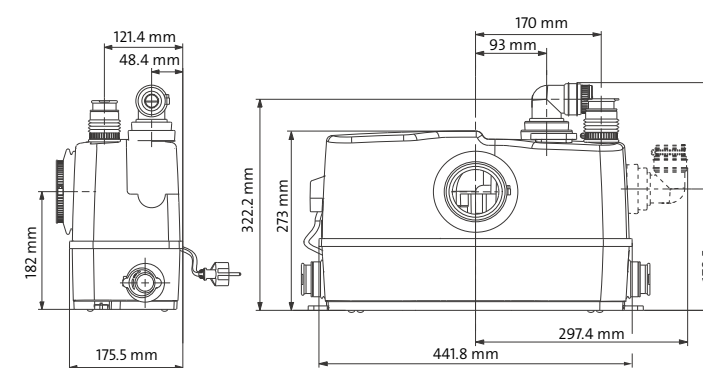
Liquid Temperature	0°C to +50°C
pH value of pumped liquid	4-10
Tank Volume	9.0 litres
Sound Pressure	Max. 70 dB

TECHNICAL DATA

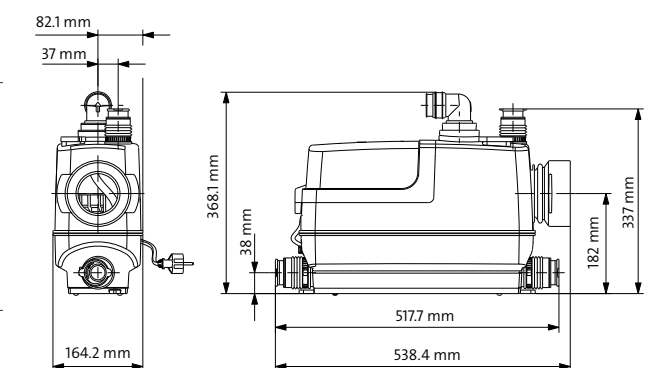
Power Supply Voltage	220-240 Volt, 50 Hz
Power Supply Cable	1.2 m with plug
Enclosure Class	Requires indoor installation (IP44)
Approvals and Markings	WaterMark Approved C-Tick Compliance

PHYSICAL ATTRIBUTES

SOLOLIFT2 WC-1 & WC-3



SOLOLIFT2 CWC-3



Model	Power (kW) P1 / P2	Connections						Weight (kg)
		Inlet (Toilet)	Inlet (Top)	Inlet (Right)	Inlet (Left)	Outlet (Top)	Outlet (Side)	
SOLOLIFT2 WC-1	0.62 / 0.42	100 mm	32/36/40 mm	-	-	22-40 mm	22-40 mm	7
SOLOLIFT2 WC-3	0.62 / 0.42	100 mm	32/36/40 mm	36/40/50 mm	36/40/50 mm	22-40 mm	22-40 mm	7
SOLOLIFT2 CWC-3	0.62 / 0.42	100 mm	36/40 mm	36/40/50 mm	-	22-40 mm	-	7

SOLOLIFT2 C-3 & D-2

COMPACT GREY WATER HANDLING STATION

WATER SOURCE



Grey Water

APPLICATION



Grey Water Handling

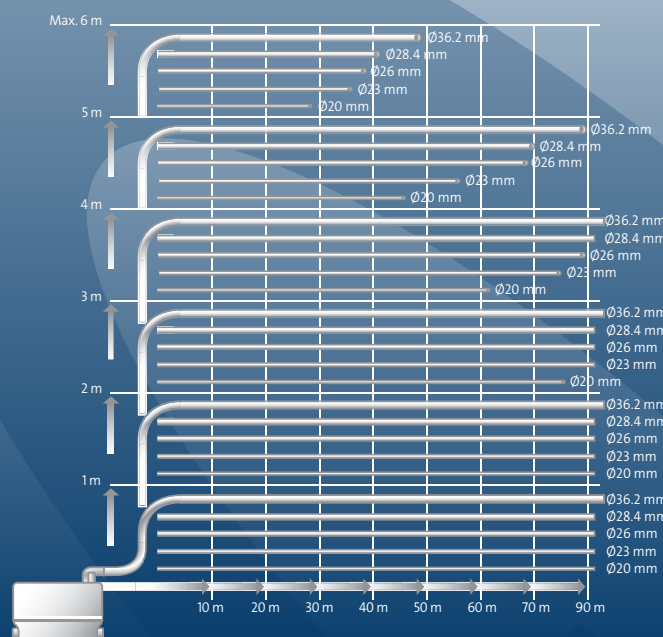
The Grundfos SOLOLIFT2 C-3 & D-2 lifting stations are compact, all-in-one pumping units designed for the effective handling of grey water from bathrooms, kitchens or laundries. Designed to be installed below street level or away from existing sewerage pipework.

- **Space saving design fits small spaces** - Compact units making them suitable for installation in to small areas
- **Low installation costs** - Plumbing connections are adjustable up to 10 mm, making installation to existing or new pipework simple and inexpensive
- **Very low maintenance** - Thanks to separated motor, pump and tank the D-2 and C-3 are very easy to maintain. Most blockages can be cleared without the need to open the units.

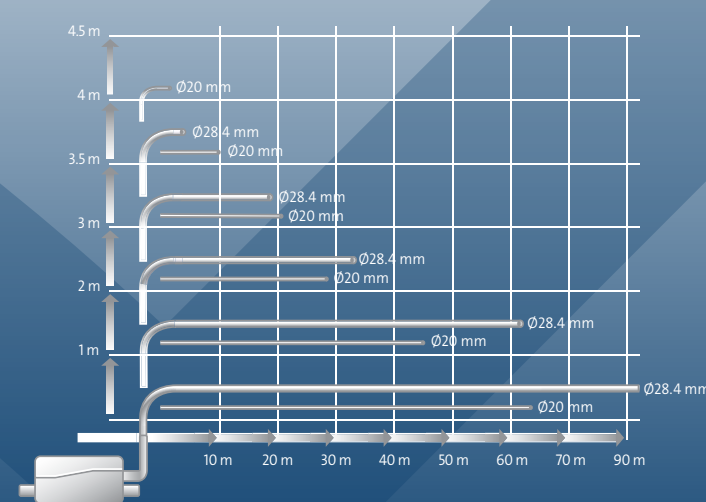
SOLOLIFT2 C-3 - Suitable for connection to a maximum of three appliances, including hand basins, showers, bathtubs or kitchen sinks, as well as to washing machines and dishwashers, where high temperature water may enter the system

SOLOLIFT2 D-2 - Suitable for connection to a maximum of two appliances such as hand basins and showers

PUMP SIZING - SOLOLIFT2 C-3



PUMP SIZING - SOLOLIFT2 D-2



SCAN THE QR CODE TO LINK TO GRUNDFOS PRODUCT CENTER



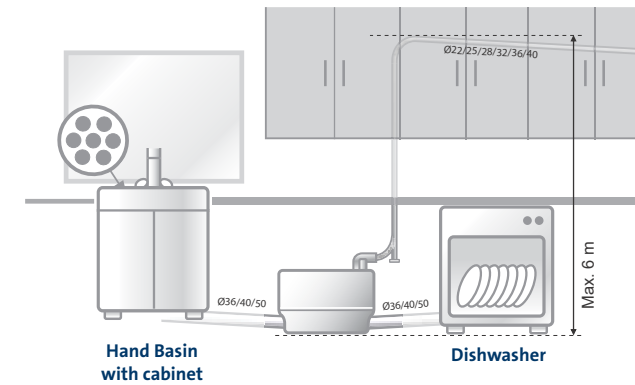
SOLOLIFT2 C-3

SOLOLIFT2 D-2

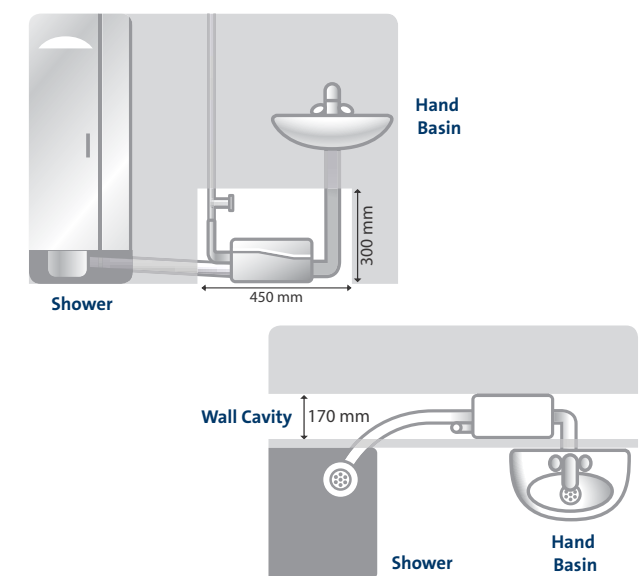
TECHNICAL DATA

INSTALLATION SCHEMATIC*

SOLOLIFT2 C-3



SOLOLIFT2 D-2



*Illustrative purposes only

OPERATING CONDITIONS

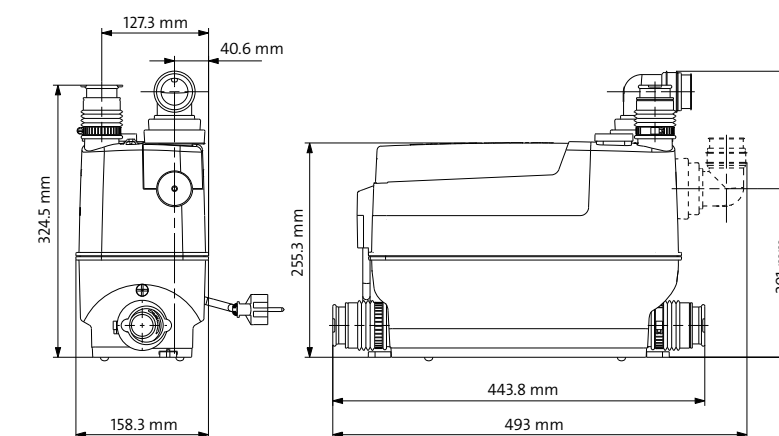
Liquid Temperature	SOLOLIFT2 C-3: 0°C to +75°C (90°C 30 mins) SOLOLIFT2 D-2: 0°C to +50°C
pH value of pumped liquid	4-10
Tank Volume	SOLOLIFT2 C-3: 5.7 litres SOLOLIFT2 D-2: 2.0 litres
Sound Pressure	Max. 70 dB

TECHNICAL DATA

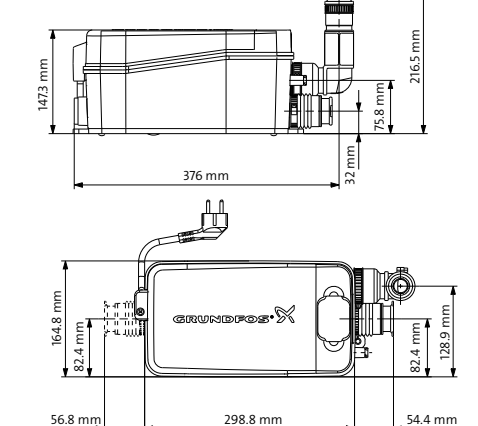
Power Supply Voltage	220-240 Volt, 50 Hz
Power Supply Cable	1.2 m with plug
Enclosure Class	Requires indoor installation (IP44)
Approvals and Markings	WaterMark Approved C-Tick Compliance

PHYSICAL ATTRIBUTES

SOLOLIFT2 C-3



SOLOLIFT2 D-2



Model	Power (kW) P1 / P2	Connections						Weight (kg)
		Inlet (Toilet)	Inlet (Top)	Inlet (Right)	Inlet (Left)	Outlet (Top)	Outlet (Side)	
SOLOLIFT2 C-3	0.64 / 0.42	100 mm	32/36/40 mm	36/40/50 mm	36/40/50 mm	22/25/28/ 32/36/40 mm	22/25/28/ 32/36/40 mm	7
SOLOLIFT2 D-2	0.28 / 0.16	100 mm	-	36/40 mm	36/40 mm	-	22/32 mm	5